

KLF3 Polyclonal Antibody

Catalog No. E-AB-61577

Note: Centrifuge before opening to ensure complete recovery of vial contents.

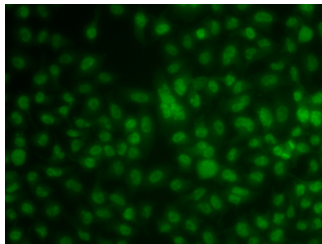
Description

Reactivity	Human
Immunogen	Recombinant fusion protein of human KLF3 (NP_057615.3).
Host	Rabbit
Isotype	IgG
Purification	Affinity purification
Conjugation	Unconjugated
Buffer	PBS with 0.02% sodium azide, 50% glycerol, pH7.3.

Applications Recommended Dilution

IF 1:50-1:100

Data



Immunofluorescence analysis of A549 cells using KLF3 Polyclonal Antibody

Preparation & Storage

Storage Store at -20°C. Avoid freeze / thaw cycles.

Background

KLF3 (Kruppel Like Factor 3) is a Protein Coding gene. Among its related pathways are Transcriptional misregulation in cancer. Gene Ontology (GO) annotations related to this gene include DNA-binding transcription factor activity. An important paralog of this gene is KLF12.

For Research Use Only