

ITLN1 Polyclonal Antibody

Catalog No. E-AB-61599

Note: Centrifuge before opening to ensure complete recovery of vial contents.

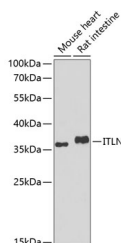
Description

Reactivity	Human, Mouse, Rat
Immunogen	Recombinant fusion protein of human ITLN1 (NP_060095.2).
Host	Rabbit
Isotype	IgG
Purification	Affinity purification
Conjugation	Unconjugated
Buffer	PBS with 0.02% sodium azide, 50% glycerol, pH7.3.

Applications Recommended Dilution

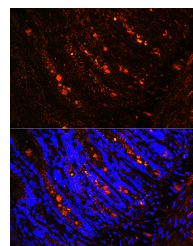
WB 1:500-1:2000 IF
1:50-1:200

Data

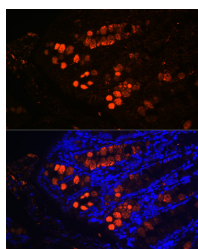


Western blot analysis of extracts of various cell lines using ITLN1 Polyclonal Antibody at dilution of 1:1000.

Observed Mw:37kDa
Calculated Mw:34kDa



Immunofluorescence analysis of Rat intestine using ITLN1 Polyclonal Antibody at dilution of 1:100 (40x lens). Blue: DAPI for nuclear staining.



Immunofluorescence analysis of Mouse colon using ITLN1 Polyclonal Antibody at dilution of 1:100 (40x lens). Blue: DAPI for nuclear staining.

Preparation & Storage

Storage Store at -20°C. Avoid freeze / thaw cycles.

For Research Use Only

Background

Intelectin-1 also known as the intestinal lactoferrin receptor is a protein that in humans is encoded by the ITLN1 gene. Intelectin-1 functions both as a receptor for bacterial arabinogalactans and for lactoferrin. Has no effect on basal glucose uptake but enhances insulin-stimulated glucose uptake in adipocytes. Increases AKT phosphorylation in the absence and presence of insulin. May play a role in the defense system against microorganisms. May specifically recognize carbohydrate chains of pathogens and bacterial components containing galactofuranosyl residues, in a calcium-dependent manner.

For Research Use Only