

POLD3 Polyclonal Antibody

Catalog Number:E-AB-61602

Note: Centrifuge before opening to ensure complete recovery of vial contents.

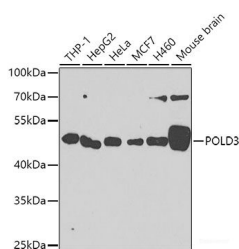
Description

Reactivity	Human,Mouse
Immunogen	Recombinant fusion protein of human POLD3 (NP_006582.1).
Host	Rabbit
Isotype	IgG
Purification	Affinity purification
Conjugation	Unconjugated
Formulation	PBS with 0.02% sodium azide, 50% glycerol, pH7.3.

Applications Recommended Dilution

WB	1:500-1:2000
IHC	1:50-1:200
IF	1:50-1:100

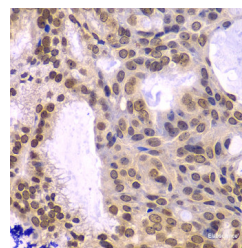
Data



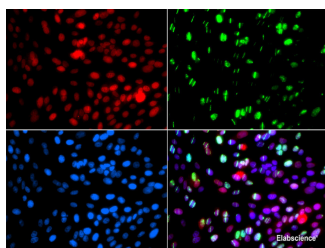
Western blot analysis of extracts of various cell lines using POLD3 Polyclonal Antibody at dilution of 1:1000.

Observed Mw:51kDa

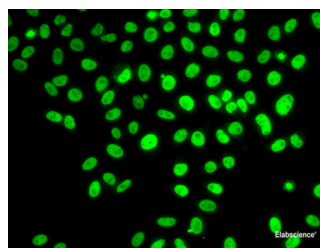
Calculated Mw:39kDa/46kDa/51kDa



Immunohistochemistry of paraffin-embedded Human oophoroma using POLD3 Polyclonal Antibody at dilution of 1:100 (40x lens).



Immunofluorescence analysis of GFP-RNF168 transgenic U2OS cells using POLD3 Polyclonal Antibody



Immunofluorescence analysis of U2OS cells using POLD3 Polyclonal Antibody

Preparation & Storage

Storage Store at -20°C. Avoid freeze / thaw cycles.

Background

For Research Use Only

A Reliable Research Partner in Life Science and Medicine

Toll-free: 1-888-852-8623

Web: www.elabscience.com

Tel: 1-832-243-6086

Email: techsupport@elabscience.com

Fax: 1-832-243-6017

POLD3 Polyclonal Antibody

Catalog Number:E-AB-61602



This gene encodes the 66-kDa subunit of DNA polymerase delta. DNA polymerase delta possesses both polymerase and 3' to 5' exonuclease activity and plays a critical role in DNA replication and repair. The encoded protein plays a role in regulating the activity of DNA polymerase delta through interactions with other subunits and the processivity cofactor proliferating cell nuclear antigen (PCNA). Alternatively spliced transcript variants have been observed for this gene.

For Research Use Only

A Reliable Research Partner in Life Science and Medicine

Toll-free: 1-888-852-8623

Web: www.elabscience.com

Tel: 1-832-243-6086

Email: techsupport@elabscience.com

Fax: 1-832-243-6017