

## NCBP2 Polyclonal Antibody

Catalog No. E-AB-61626

**Note:** Centrifuge before opening to ensure complete recovery of vial contents.

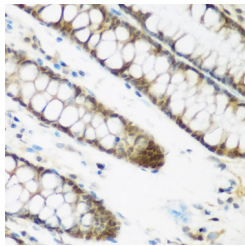
### Description

<b>Reactivity</b>	Human, Mouse
<b>Immunogen</b>	Recombinant fusion protein of human NCBP2 (NP_031388.2).
<b>Host</b>	Rabbit
<b>Isotype</b>	IgG
<b>Purification</b>	Affinity purification
<b>Conjugation</b>	Unconjugated
<b>Buffer</b>	PBS with 0.02% sodium azide, 50% glycerol, pH7.3.

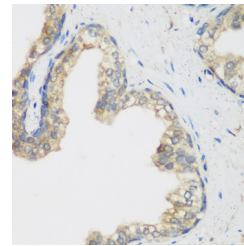
### Applications Recommended Dilution

IHC 1:50-1:200 IF  
1:50-1:100

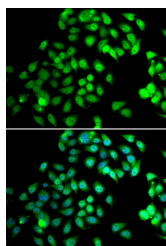
### Data



Immunohistochemistry of paraffin-embedded Human colon using NCBP2 Polyclonal Antibody at dilution of 1:200 (40x lens).



Immunohistochemistry of paraffin-embedded Human prostate using NCBP2 Polyclonal Antibody at dilution of 1:200 (40x lens).



Immunofluorescence analysis of MCF-7 cells using NCBP2 Polyclonal Antibody

### Preparation & Storage

**Storage** Store at -20°C. Avoid freeze / thaw cycles.

### Background

The product of this gene is a component of the nuclear cap-binding protein complex (CBC), which binds to the

### For Research Use Only

monomethylated 5' cap of nascent pre-mRNA in the nucleoplasm. The encoded protein has an RNP domain commonly found in RNA binding proteins, and contains the cap-binding activity. The CBC promotes pre-mRNA splicing, 3'-end processing, RNA nuclear export, and nonsense-mediated mRNA decay. Multiple transcript variants encoding different isoforms have been found for this gene.