

## (KO Validated) SGTA Polyclonal Antibody

Catalog No. E-AB-61637

*Note:* Centrifuge before opening to ensure complete recovery of vial contents.

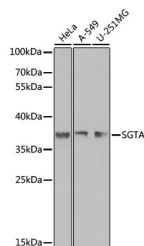
### Description

|                     |   |
|---------------------|---|
| <b>Reactivity</b>   | Human   |
| <b>Immunogen</b>    | Recombinant fusion protein of human SGTA          |
| <b>Host</b>         | Rabbit  |
| <b>Isotype</b>      | IgG   |
| <b>Purification</b> | Affinity purification                             |
| <b>Conjugation</b>  | Unconjugated                                      |
| <b>Buffer</b>       | PBS with 0.02% sodium azide, 50% glycerol, pH7.3. |

### Applications Recommended Dilution

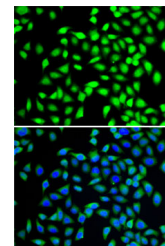
|           |              |
|-----------|--------------|
| <b>WB</b> | 1:500-1:2000 |
| <b>IF</b> | 1:50-1:100   |

### Data



Western blot analysis of extracts of various cell lines using SGTA Polyclonal Antibody at 1:1000 dilution.

**Observed Mw:38kDa**  
**Calculated Mw:34kDa**



Immunofluorescence analysis of A-549 cells using SGTA Polyclonal Antibody Blue: DAPI for nuclear staining.

### Preparation & Storage

**Storage** Store at -20°C. Avoid freeze / thaw cycles.

### Background

This gene encodes a protein which is capable of interacting with the major nonstructural protein of parvovirus H-1 and 70-kDa heat shock cognate protein; however, its function is not known. Since this transcript is expressed ubiquitously in various tissues, this protein may serve a housekeeping function.

### For Research Use Only