

YTHDC1 Polyclonal Antibody

Catalog Number:E-AB-62555

Note: Centrifuge before opening to ensure complete recovery of vial contents.

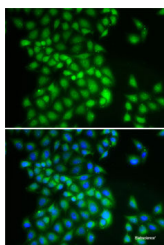
Description

Reactivity	Human,Mouse,Rat
Immunogen	Recombinant fusion protein of human YTHDC1 (NP_001026902.1).
Host	Rabbit
Isotype	IgG
Purification	Affinity purification
Conjugation	Unconjugated
Formulation	PBS with 0.02% sodium azide, 50% glycerol, pH7.3.

Applications Recommended Dilution

IF	1:50-1:100
-----------	------------

Data



Immunofluorescence analysis of A-549 cells using YTHDC1 Polyclonal Antibody

Preparation & Storage

Storage	Store at -20°C. Avoid freeze / thaw cycles.
----------------	---

Background

YTHDC1 (YTH Domain Containing 1) is a Protein Coding gene. Diseases associated with YTHDC1 include Periosteal Chondrosarcoma and Wilms Tumor 1. Among its related pathways are Chromatin Regulation / Acetylation. Gene Ontology (GO) annotations related to this gene include N6-methyladenosine-containing RNA binding. An important paralog of this gene is YTHDF1.

For Research Use Only

A Reliable Research Partner in Life Science and Medicine

Toll-free: 1-888-852-8623

Web: www.elabscience.com

Tel: 1-832-243-6086

Email: techsupport@elabscience.com

Fax: 1-832-243-6017