

## ZNF20 Polyclonal Antibody

**Catalog No.** E-AB-61660

**Note:** Centrifuge before opening to ensure complete recovery of vial contents.

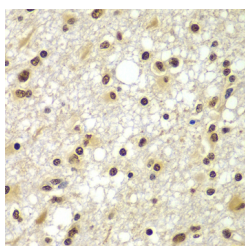
### Description

<b>Reactivity</b>	Human,Mouse,Rat
<b>Immunogen</b>	Recombinant fusion protein of human ZNF20 (NP_066966.2).
<b>Host</b>	Rabbit
<b>Isotype</b>	IgG
<b>Purification</b>	Affinity purification
<b>Conjugation</b>	Unconjugated
<b>Buffer</b>	PBS with 0.02% sodium azide, 50% glycerol, pH7.3.

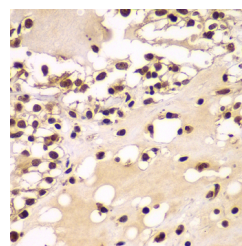
### Applications Recommended Dilution

**IHC 1:50-1:200**

### Data



Immunohistochemistry of paraffin-embedded Human brain cancer using ZNF20 Polyclonal Antibody at dilution of 1:100 (40x lens).



Immunohistochemistry of paraffin-embedded Human kidney cancer using ZNF20 Polyclonal Antibody at dilution of 1:100 (40x lens).

### Preparation & Storage

**Storage** Store at -20°C. Avoid freeze / thaw cycles.

### Background

ZNF20 (Zinc Finger Protein 20) is a Protein Coding gene. Diseases associated with ZNF20 include Endocervical Carcinoma and Endocervical Adenocarcinoma. Among its related pathways are Gene Expression and Herpes simplex virus 1 infection. Gene Ontology (GO) annotations related to this gene include nucleic acid binding. An important paralog of this gene is ZNF440.

### For Research Use Only