

FASTKD1 Polyclonal Antibody

Catalog No. E-AB-62520

Note: Centrifuge before opening to ensure complete recovery of vial contents.

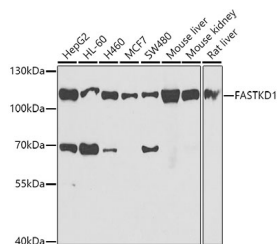
Description

Reactivity	Human,Mouse,Rat
Immunogen	Recombinant fusion protein of human FASTKD1
Host	Rabbit
Isotype	IgG
Purification	Affinity purification
Conjugation	Unconjugated
Buffer	PBS with 0.02% sodium azide,50% glycerol,pH7.3.

Applications Recommended Dilution

WB 1:500-1:2000

Data



Western blot analysis of extracts of various cell lines using FASTKD1 Polyclonal Antibody at 1:1000 dilution.

Observed Mw:110kDa
Calculated Mw:92kDa/97kDa

Preparation & Storage

Storage Store at -20°C. Avoid freeze / thaw cycles.

Background

Involved in the down-regulation of mitochondrial MT-ND3 mRNA levels which leads to decreased respiratory complex I abundance and activity.

For Research Use Only