

## TM9SF1 Polyclonal Antibody

**Catalog No.** E-AB-61721

*Note:* Centrifuge before opening to ensure complete recovery of vial contents.

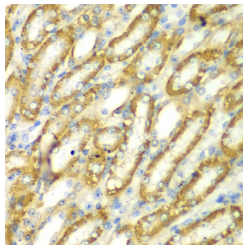
### Description

<b>Reactivity</b>	Human,Mouse
<b>Immunogen</b>	Recombinant fusion protein of human TM9SF1 (NP_006396.2).
<b>Host</b>	Rabbit
<b>Isotype</b>	IgG
<b>Purification</b>	Affinity purification
<b>Conjugation</b>	Unconjugated
<b>Buffer</b>	PBS with 0.02% sodium azide, 50% glycerol, pH7.3.

### Applications Recommended Dilution

**IHC 1:50-1:200**

### Data



Immunohistochemistry of paraffin-embedded Mouse kidney using TM9SF1 Polyclonal Antibody at dilution of 1:100 (40x lens).

### Preparation & Storage

**Storage** Store at -20°C. Avoid freeze / thaw cycles.

### Background

TM9SF1 (Transmembrane 9 Superfamily Member 1) is a Protein Coding gene. An important paralog of this gene is ENSG00000254692.

### For Research Use Only