

ELF2 Polyclonal Antibody

Catalog No. E-AB-61741

Note: Centrifuge before opening to ensure complete recovery of vial contents.

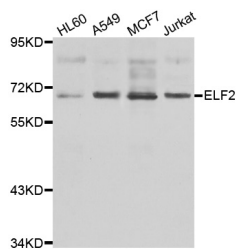
Description

Reactivity	Human, Mouse, Rat
Immunogen	Recombinant protein of human ELF2
Host	Rabbit
Isotype	IgG
Purification	Affinity purification
Conjugation	Unconjugated
Buffer	PBS with 0.02% sodium azide and 50% glycerol pH 7.4.

Applications Recommended Dilution

WB 1:500 - 1:2000

Data



Western blot analysis of extracts of various cell lines
with ELF2 Polyclonal Antibody

Observed Mw:64kDa

Calculated Mw:54kDa/56kDa/57kDa/62kDa/63kDa

Preparation & Storage

Storage Store at -20°C. Avoid freeze / thaw cycles.

For Research Use Only