

## RAB31 Polyclonal Antibody

Catalog No. E-AB-61755

**Note:** Centrifuge before opening to ensure complete recovery of vial contents.

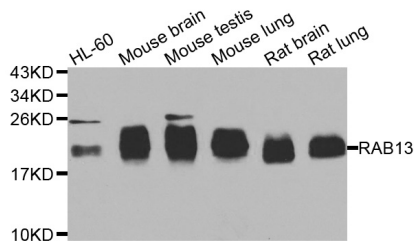
### Description

<b>Reactivity</b>	Human, Mouse, Rat
<b>Immunogen</b>	Recombinant protein of human RAB31
<b>Host</b>	Rabbit
<b>Isotype</b>	IgG
<b>Purification</b>	Affinity purification
<b>Conjugation</b>	Unconjugated
<b>Buffer</b>	PBS with 0.02% sodium azide and 50% glycerol pH 7.4.

### Applications Recommended Dilution

**WB** 1:500-1:2000

### Data



Western blot analysis of extracts of various cell lines  
with RAB31 Polyclonal Antibody

**Observed Mw:22kDa**  
**Calculated Mw:21kDa**

### Preparation & Storage

**Storage** Store at -20°C. Avoid freeze / thaw cycles.

### For Research Use Only