

## MYH7 Polyclonal Antibody

**Catalog No.** E-AB-62836

*Note:* Centrifuge before opening to ensure complete recovery of vial contents.

### Description

<b>Reactivity</b>	Mouse,Rat
<b>Immunogen</b>	Recombinant fusion protein of human MYH7 (NP_000248.2).
<b>Host</b>	Rabbit
<b>Isotype</b>	IgG
<b>Purification</b>	Affinity purification
<b>Conjugation</b>	Unconjugated
<b>Buffer</b>	PBS with 0.02% sodium azide, 50% glycerol, pH7.3.

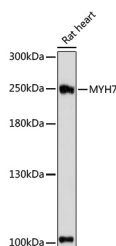
### Applications Recommended Dilution

**WB 1:500-1:2000 IHC**

**1:50-1:100 IF**

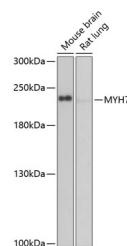
**1:50-1:200**

### Data

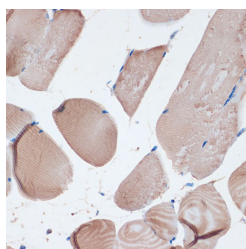


Western blot analysis of extracts of Rat heart using MYH7 Polyclonal Antibody at dilution of 1:1000.

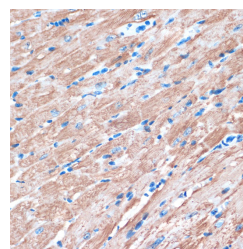
**Observed Mw:223kDa**  
**Calculated Mw:223kDa**



Western blot analysis of extracts of various cell lines using MYH7 Polyclonal Antibody at dilution of 1:1000.

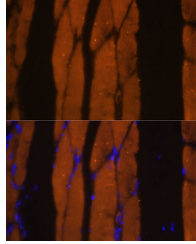


Immunohistochemistry of paraffin-embedded Mouse skeletal muscle using MYH7 Polyclonal Antibody at dilution of 1:100 (40x lens).



Immunohistochemistry of paraffin-embedded Mouse heart using MYH7 Polyclonal Antibody at dilution of 1:100 (40x lens).

### For Research Use Only



Immunofluorescence analysis of Rat skeletal muscle using MYH7 Polyclonal Antibody at dilution of 1:100. Blue: DAPI for nuclear staining.

## Preparation & Storage

**Storage** Store at -20°C. Avoid freeze / thaw cycles.

## Background

Muscle myosin is a hexameric protein containing 2 heavy chain subunits, 2 alkali light chain subunits, and 2 regulatory light chain subunits. This gene encodes the beta (or slow) heavy chain subunit of cardiac myosin. It is expressed predominantly in normal human ventricle. It is also expressed in skeletal muscle tissues rich in slow-twitch type I muscle fibers. Changes in the relative abundance of this protein and the alpha (or fast) heavy subunit of cardiac myosin correlate with the contractile velocity of cardiac muscle. Its expression is also altered during thyroid hormone depletion and hemodynamic overloading. Mutations in this gene are associated with familial hypertrophic cardiomyopathy, myosin storage myopathy, dilated cardiomyopathy, and Laing early-onset distal myopathy.

## For Research Use Only