

ZCWPW1 Polyclonal Antibody

Catalog No. E-AB-62467

Note: Centrifuge before opening to ensure complete recovery of vial contents.

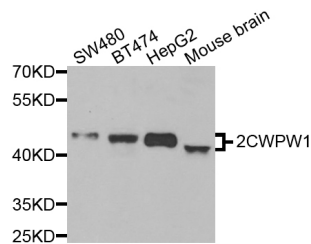
Description

Reactivity	Human, Mouse
Immunogen	Recombinant protein of human ZCWPW1
Host	Rabbit
Isotype	IgG
Purification	Affinity purification
Conjugation	Unconjugated
Buffer	PBS with 0.02% sodium azide and 50% glycerol pH 7.4.

Applications Recommended Dilution

WB 1:500-1:2000

Data



Western blot analysis of extracts of various cell lines
with ZCWPW1 Polyclonal Antibody

Observed Mw: 50kDa

Calculated Mw: 45kDa/52kDa/53kDa/59kDa/72kDa

Preparation & Storage

Storage Store at -20°C. Avoid freeze / thaw cycles.

For Research Use Only