

# TET3 Polyclonal Antibody

Catalog Number:E-AB-62581

**Note:** Centrifuge before opening to ensure complete recovery of vial contents.

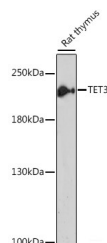
## Description

<b>Reactivity</b>	Human,Mouse,Rat
<b>Immunogen</b>	Recombinant fusion protein of human TET3 (NP_001274420.1).
<b>Host</b>	Rabbit
<b>Isotype</b>	IgG
<b>Purification</b>	Affinity purification
<b>Conjugation</b>	Unconjugated
<b>Formulation</b>	PBS with 0.02% sodium azide, 50% glycerol, pH7.3.

## Applications Recommended Dilution

<b>WB</b>	1:500-1:2000
<b>IF</b>	1:50-1:200

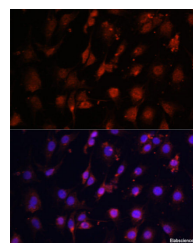
## Data



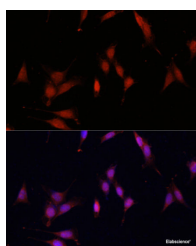
Western blot analysis of extracts of Rat thymus using TET3 Polyclonal Antibody at dilution of 1:1000.

**Observed Mw:200kDa**

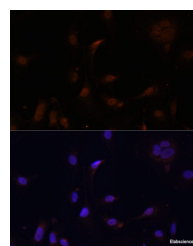
**Calculated Mw:77kDa/166kDa/179kDa**



Immunofluorescence analysis of C6 cells using TET3 Polyclonal Antibody at dilution of 1:100. Blue: DAPI for nuclear staining.



Immunofluorescence analysis of NIH/3T3 using TET3 Polyclonal Antibody at dilution of 1:100. Blue: DAPI for nuclear staining.



Immunofluorescence analysis of U2OS cells using TET3 Polyclonal Antibody at dilution of 1:100. Blue: DAPI for nuclear staining.

## Preparation & Storage

**Storage** Store at -20°C. Avoid freeze / thaw cycles.

## Background

TET3 (Tet Methylcytosine Dioxygenase 3) is a Protein Coding gene. Diseases associated with TET3 include Beck-Fahrner Syndrome and Miles-Carpenter Syndrome. Among its related pathways are MECP2 and Associated Rett Syndrome and Activated PKN1 stimulates transcription of AR (androgen receptor) regulated genes KLK2 and KLK3.

## For Research Use Only

A Reliable Research Partner in Life Science and Medicine

Toll-free: 1-888-852-8623

Web: [www.elabscience.com](http://www.elabscience.com)

Tel: 1-832-243-6086

Email: [techsupport@elabscience.com](mailto:techsupport@elabscience.com)

Fax: 1-832-243-6017

# TET3 Polyclonal Antibody

Catalog Number:E-AB-62581



Gene Ontology (GO) annotations related to this gene include methylcytosine dioxygenase activity. An important paralog of this gene is TET2.

---

## For Research Use Only

A Reliable Research Partner in Life Science and Medicine

Toll-free: 1-888-852-8623

Web: [www.elabscience.com](http://www.elabscience.com)

Tel: 1-832-243-6086

Email: [techsupport@elabscience.com](mailto:techsupport@elabscience.com)

Fax: 1-832-243-6017