

## BAAT Polyclonal Antibody

**Catalog No.** E-AB-62639

*Note:* Centrifuge before opening to ensure complete recovery of vial contents.

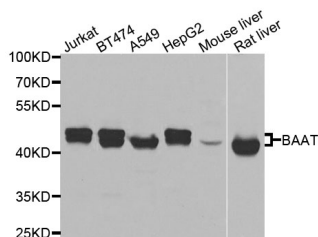
### Description

<b>Reactivity</b>	Human,Mouse,Rat
<b>Immunogen</b>	Recombinant protein of human BAAT
<b>Host</b>	Rabbit
<b>Isotype</b>	IgG
<b>Purification</b>	Affinity purification
<b>Conjugation</b>	Unconjugated
<b>Buffer</b>	PBS with 0.02% sodium azide and 50% glycerol pH 7.4.

### Applications Recommended Dilution

**WB 1:500 - 1:2000**

### Data



Western blot analysis of extracts of various cell lines with BAAT Polyclonal Antibody

**Observed Mw:46kDa**  
**Calculated Mw:46kDa**

### Preparation & Storage

**Storage** Store at -20°C. Avoid freeze / thaw cycles.

### Background

The protein encoded by this gene is a liver enzyme that catalyzes the transfer of C24 bile acids from the acyl-CoA thioester to either glycine or taurine, the second step in the formation of bile acid-amino acid conjugates. The bile acid conjugates then act as a detergent in the gastrointestinal tract, which enhances lipid and fat-soluble vitamin absorption. Defects in this gene are a cause of familial hypercholanemia (FHCA). Two transcript variants encoding the same protein have been found for this gene.

### For Research Use Only