

HSPA6 Polyclonal Antibody

Catalog Number:E-AB-62099

Note: Centrifuge before opening to ensure complete recovery of vial contents.

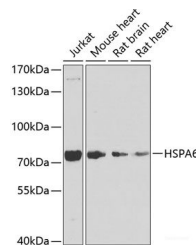
Description

Reactivity	Human,Mouse,Rat
Immunogen	Recombinant fusion protein of human HSPA6 (NP_002146.2).
Host	Rabbit
Isotype	IgG
Purification	Affinity purification
Conjugation	Unconjugated
Formulation	PBS with 0.02% sodium azide, 50% glycerol, pH7.3.

Applications Recommended Dilution

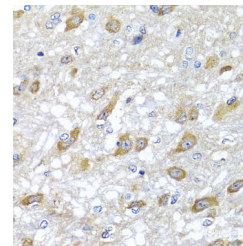
WB	1:500-1:2000
IHC	1:50-1:200

Data

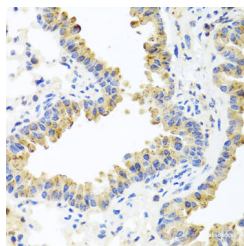


Western blot analysis of extracts of various cell lines using HSPA6 Polyclonal Antibody at dilution of 1:1000.

Observed Mw:71kDa
Calculated Mw:71kDa



Immunohistochemistry of paraffin-embedded Rat brain using HSPA6 Polyclonal Antibody at dilution of 1:100 (40x lens).



Immunohistochemistry of paraffin-embedded Mouse lung using HSPA6 Polyclonal Antibody at dilution of 1:100 (40x lens).

Preparation & Storage

Storage Store at -20°C. Avoid freeze / thaw cycles.

Background

HSPA6 (Heat Shock Protein Family A (Hsp70) Member 6) is a Protein Coding gene. Diseases associated with HSPA6 include Hepatocellular Carcinoma. Among its related pathways are Cellular response to heat stress and Mechanisms of

For Research Use Only

A Reliable Research Partner in Life Science and Medicine

Toll-free: 1-888-852-8623

Web: www.elabscience.com

Tel: 1-832-243-6086

Email: techsupport@elabscience.com

Fax: 1-832-243-6017

HSPA6 Polyclonal Antibody

Catalog Number:E-AB-62099



CFTR activation by S-nitrosoglutathione (normal and CF). Gene Ontology (GO) annotations related to this gene include enzyme binding and heat shock protein binding. An important paralog of this gene is HSPA1A.

For Research Use Only

A Reliable Research Partner in Life Science and Medicine

Toll-free: 1-888-852-8623

Tel: 1-832-243-6086

Fax: 1-832-243-6017

Web: www.elabscience.com

Email: techsupport@elabscience.com