

## IRF1 Polyclonal Antibody

Catalog No. E-AB-62105

**Note:** Centrifuge before opening to ensure complete recovery of vial contents.

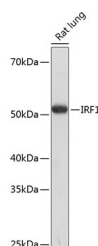
### Description

<b>Reactivity</b>	Human,Mouse,Rat
<b>Immunogen</b>	A synthetic peptide of human IRF1
<b>Host</b>	Rabbit
<b>Isotype</b>	IgG
<b>Purification</b>	Affinity purification
<b>Conjugation</b>	Unconjugated
<b>Buffer</b>	PBS with 0.02% sodium azide, 50% glycerol, pH7.3.

### Applications Recommended Dilution

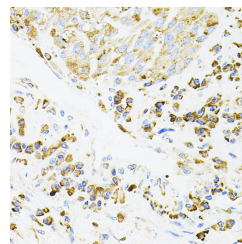
<b>WB</b>	1:500-1:2000
<b>IHC</b>	1:50-1:100
<b>IF</b>	1:50-1:100

### Data

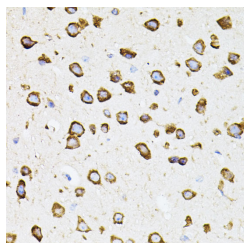


Western blot analysis of extracts of Rat lung using IRF1 Polyclonal Antibody at dilution of 1:1000.

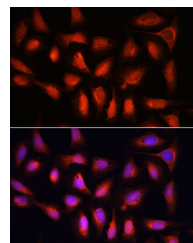
**Observed Mw:50KDa**  
**Calculated Mw:36kDa**



Immunohistochemistry of paraffin-embedded Human lung cancer using IRF1 Polyclonal Antibody



Immunohistochemistry of paraffin-embedded Mouse brain using IRF1 Polyclonal Antibody



Immunofluorescence analysis of U-2 OS cells using IRF1 Polyclonal Antibody at dilution of 1:100. Blue: DAPI for nuclear staining.

### Preparation & Storage

#### For Research Use Only

**Storage**                      Store at -20°C. Avoid freeze / thaw cycles.

## Background

IRF1 encodes interferon regulatory factor 1, a member of the interferon regulatory transcription factor (IRF) family. IRF1 serves as an activator of interferons alpha and beta transcription, and in mouse it has been shown to be required for double-stranded RNA induction of these genes. IRF1 also functions as a transcription activator of genes induced by interferons alpha, beta, and gamma. Further, IRF1 has been shown to play roles in regulating apoptosis and tumor-suppression.