

YBX1 Polyclonal Antibody

Catalog No. E-AB-62155

Note: Centrifuge before opening to ensure complete recovery of vial contents.

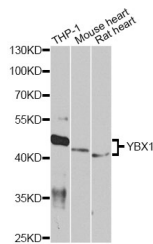
Description

Reactivity	Human, Mouse, Rat
Immunogen	A synthetic peptide of human YBX1
Host	Rabbit
Isotype	IgG
Purification	Affinity purification
Conjugation	Unconjugated
Buffer	PBS with 0.02% sodium azide and 50% glycerol pH 7.4.

Applications Recommended Dilution

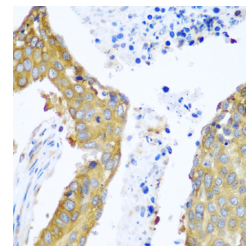
WB	1:500-1:2000
IHC	1:100-1:200

Data

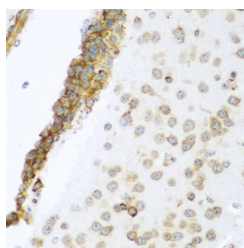


Western blot analysis of extracts of various cell lines with YBX1 Polyclonal Antibody

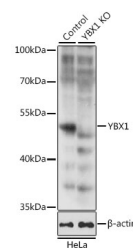
Observed Mw:50kDa
Calculated Mw:35kDa



Immunohistochemistry of paraffin-embedded human lung cancer with YBX1 Polyclonal Antibody



Immunohistochemistry of paraffin-embedded mouse brain with YBX1 Polyclonal Antibody



Western blot analysis of extracts from normal (control) and YBX1 knockout (KO) HeLa cells, using YBX1 Polyclonal Antibody at dilution of 1:1000.

Preparation & Storage

Storage Store at -20°C. Avoid freeze / thaw cycles.

For Research Use Only

Background

This gene encodes a highly conserved cold shock domain protein that has broad nucleic acid binding properties. The encoded protein functions as both a DNA and RNA binding protein and has been implicated in numerous cellular processes including regulation of transcription and translation, pre-mRNA splicing, DNA reparation and mRNA packaging. This protein is also a component of messenger ribonucleoprotein (mRNP) complexes and may have a role in microRNA processing. This protein can be secreted through non-classical pathways and functions as an extracellular mitogen. Aberrant expression of the gene is associated with cancer proliferation in numerous tissues. This gene may be a prognostic marker for poor outcome and drug resistance in certain cancers. Alternate splicing results in multiple transcript variants. Pseudogenes of this gene are found on multiple chromosomes.