

SLC4A2 Polyclonal Antibody

Catalog No. E-AB-63863

Note: Centrifuge before opening to ensure complete recovery of vial contents.

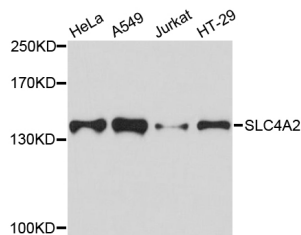
Description

Reactivity	Human
Immunogen	Recombinant protein of human SLC4A2
Host	Rabbit
Isotype	IgG
Purification	Affinity purification
Conjugation	Unconjugated
Buffer	PBS with 0.02% sodium azide and 50% glycerol pH 7.4.

Applications Recommended Dilution

WB 1:500-1:2000

Data



Western blot analysis of extracts of various cell lines with SLC4A2 Polyclonal Antibody

Observed Mw:140kDa

Calculated Mw:135kDa/136kDa/137kDa

Preparation & Storage

Storage Store at -20°C. Avoid freeze / thaw cycles.

Background

This gene encodes a member of the anion exchanger family of membrane transport proteins. The encoded protein regulates intracellular pH, biliary bicarbonate secretion, and chloride uptake. Reduced expression of this gene may be associated with primary biliary cirrhosis (PBC) in human patients, while differential expression of this gene may be associated with malignant hepatocellular carcinoma, colon and gastric cancers.

For Research Use Only