

## KDM5B Polyclonal Antibody

**Catalog No.** E-AB-62361

*Note:* Centrifuge before opening to ensure complete recovery of vial contents.

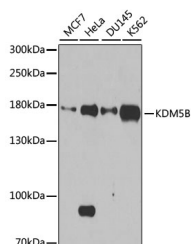
### Description

<b>Reactivity</b>	Human
<b>Immunogen</b>	Recombinant protein of human KDM5B
<b>Host</b>	Rabbit
<b>Isotype</b>	IgG
<b>Purification</b>	Affinity purification
<b>Conjugation</b>	Unconjugated
<b>Buffer</b>	PBS with 0.02% sodium azide and 50% glycerol pH 7.4.

### Applications Recommended Dilution

**WB** 1:500-1:2000

### Data



Western blot analysis of extracts of various cell lines with KDM5B Polyclonal Antibody

**Observed Mw:176kDa**

**Calculated Mw:175kDa/179kDa**

### Preparation & Storage

**Storage** Store at -20°C. Avoid freeze / thaw cycles.

### Background

This gene encodes a lysine-specific histone demethylase that belongs to the jumonji/ARID domain-containing family of histone demethylases. The encoded protein is capable of demethylating tri-, di- and monomethylated lysine 4 of histone H3. This protein plays a role in the transcriptional repression or certain tumor suppressor genes and is upregulated in certain cancer cells. This protein may also play a role in genome stability and DNA repair. Alternate splicing results in multiple transcript variants.

### For Research Use Only