

RPL36 Polyclonal Antibody

Catalog No. E-AB-62405

Note: Centrifuge before opening to ensure complete recovery of vial contents.

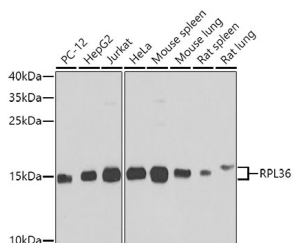
Description

Reactivity	Human, Mouse, Rat
Immunogen	Recombinant fusion protein of human RPL36 (NP_056229.2).
Host	Rabbit
Isotype	IgG
Purification	Affinity purification
Conjugation	Unconjugated
Buffer	PBS with 0.02% sodium azide, 50% glycerol, pH7.3.

Applications Recommended Dilution

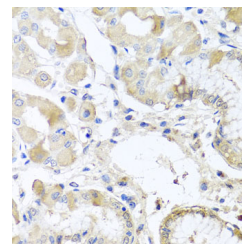
WB	1:500-1:2000
IHC	1:50-1:200
IF	1:50-1:200

Data

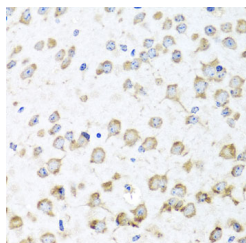


Western blot analysis of extracts of various cell lines using RPL36 Polyclonal Antibody at dilution of 1:1000.

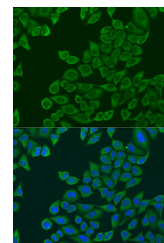
Observed Mw:15kDa
Calculated Mw:12kDa



Immunohistochemistry of paraffin-embedded Human stomach using RPL36 Polyclonal Antibody at dilution of 1:100 (40x lens).

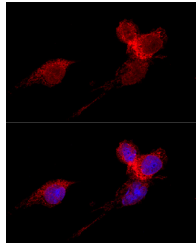


Immunohistochemistry of paraffin-embedded Mouse brain using RPL36 Polyclonal Antibody at dilution of 1:100 (40x lens).

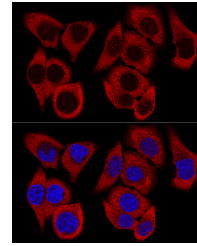


Immunofluorescence analysis of U2OS cells using RPL36 Polyclonal Antibody at dilution of 1:100. Blue: DAPI for nuclear staining.

For Research Use Only



Confocal immunofluorescence analysis of HeLa cells using RPL36 Polyclonal Antibody at dilution of 1:200. Blue: DAPI for nuclear staining.



Confocal immunofluorescence analysis of HeLa cells using RPL36 Polyclonal Antibody at dilution of 1:200. Blue: DAPI for nuclear staining.

Preparation & Storage

Storage Store at -20°C. Avoid freeze / thaw cycles.

Background

Ribosomes, the organelles that catalyze protein synthesis, consist of a small 40S subunit and a large 60S subunit. Together these subunits are composed of 4 RNA species and approximately 80 structurally distinct proteins. This gene encodes a ribosomal protein that is a component of the 60S subunit. The protein belongs to the L36E family of ribosomal proteins. It is located in the cytoplasm. Transcript variants derived from alternative splicing exist; they encode the same protein. As is typical for genes encoding ribosomal proteins, there are multiple processed pseudogenes of this gene dispersed through the genome.

For Research Use Only