

## ATP1A1 Polyclonal Antibody

Catalog No. E-AB-62634

*Note:* Centrifuge before opening to ensure complete recovery of vial contents.

### Description

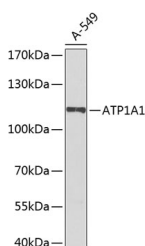
|                     |   |
|---------------------|---|
| <b>Reactivity</b>   | Human,Mouse,Rat                               |
| <b>Immunogen</b>    | A synthetic peptide of human ATP1A1           |
| <b>Host</b>         | Rabbit  |
| <b>Isotype</b>      | IgG   |
| <b>Purification</b> | Affinity purification                         |
| <b>Conjugation</b>  | Unconjugated                                  |
| <b>Buffer</b>       | PBS with 0.05% proclin300,50% glycerol,pH7.3. |

### Applications

### Recommended Dilution

|            |              |
|------------|--------------|
| <b>WB</b>  | 1:500-1:2000 |
| <b>IHC</b> | 1:50-1:200   |

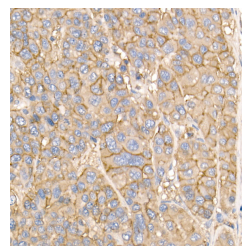
### Data



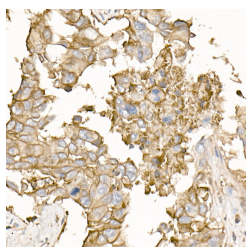
Western blot analysis of extracts of various cell lines using Na<sup>+</sup>/K<sup>+</sup>-ATPase Polyclonal Antibody at 1:500 dilution.

**Observed Mw:100KDa**

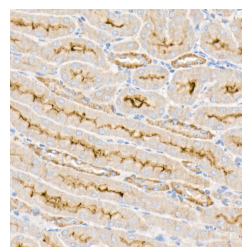
**Calculated Mw:74kDa/109kDa/112kDa/113kDa**



Immunohistochemistry of paraffin-embedded human liver cancer using Na<sup>+</sup>/K<sup>+</sup>-ATPase Polyclonal Antibody at dilution of 1:50 (40x lens). Perform high pressure antigen retrieval with 10 mM citrate buffer pH 6.0 before commencing with IHC staining protocol.



Immunohistochemistry of paraffin-embedded human lung cancer using Na<sup>+</sup>/K<sup>+</sup>-ATPase Polyclonal antibody at dilution of 1:50 (40x lens). Perform high pressure antigen retrieval with 10 mM citrate buffer pH 6.0 before commencing with IHC staining protocol.



Immunohistochemistry of paraffin-embedded mouse kidney using Na<sup>+</sup>/K<sup>+</sup>-ATPase Polyclonal antibody at dilution of 1:50 (40x lens). Perform high pressure antigen retrieval with 10 mM citrate buffer pH 6.0 before commencing with IHC staining protocol.

### For Research Use Only

## Preparation & Storage

**Storage**                      Store at -20°C. Avoid freeze / thaw cycles.

## Background

The protein encoded by this gene belongs to the family of P-type cation transport ATPases, and to the subfamily of Na<sup>+</sup>/K<sup>+</sup> -ATPases. Na<sup>+</sup>/K<sup>+</sup> -ATPase is an integral membrane protein responsible for establishing and maintaining the electrochemical gradients of Na and K ions across the plasma membrane. These gradients are essential for osmoregulation, for sodium-coupled transport of a variety of organic and inorganic molecules, and for electrical excitability of nerve and muscle. This enzyme is composed of two subunits, a large catalytic subunit (alpha) and a smaller glycoprotein subunit (beta). The catalytic subunit of Na<sup>+</sup>/K<sup>+</sup> -ATPase is encoded by multiple genes. This gene encodes an alpha 1 subunit. Multiple transcript variants encoding different isoforms have been found for this gene.

---

## For Research Use Only