

CAPRIN1 Polyclonal Antibody

Catalog No. E-AB-62119

Note: Centrifuge before opening to ensure complete recovery of vial contents.

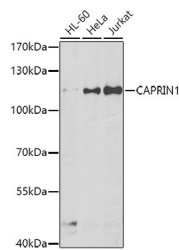
Description

Reactivity	Human, Mouse, Rat
Immunogen	Recombinant protein of human CAPRIN1
Host	Rabbit
Isotype	IgG
Purification	Affinity purification
Conjugation	Unconjugated
Buffer	PBS with 0.02% sodium azide, 50% glycerol, pH7.3.

Applications Recommended Dilution

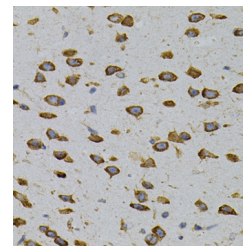
WB 1:500-1:2000 IHC
1:100-1:200

Data



Western blot analysis of extracts of various cell lines using CAPRIN1 Polyclonal Antibody at dilution of 1:500.

Observed Mw:120kDa
Calculated Mw:76kDa/78kDa



Immunohistochemistry of paraffin-embedded Mouse brain using CAPRIN1 Polyclonal Antibody

Preparation & Storage

Storage Store at -20°C. Avoid freeze / thaw cycles.

Background

Caprin-1 is a protein that in humans is encoded by the CAPRIN1 gene. May regulate the transport and translation of mRNAs of proteins involved in synaptic plasticity in neurons and cell proliferation and migration in multiple cell types. May form homomultimers. Directly interacts with G3BP1 in cytoplasmic RNA granules. Binds directly and selectively to MYC and CCND2 RNAs. In neuronal cells, directly binds to several mRNAs associated with RNA granules, including BDNF, CAMK2A, CREB1, MAP2, NTRK2 mRNAs, as well as to GRIN1 and KPNB1 mRNAs, but not to rRNAs.

For Research Use Only