

MTX1 Polyclonal Antibody

Catalog No. E-AB-62130

Note: Centrifuge before opening to ensure complete recovery of vial contents.

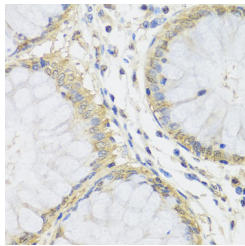
Description

Reactivity	Human, Mouse, Rat
Immunogen	Recombinant fusion protein of human MTX1 (NP_942584.2).
Host	Rabbit
Isotype	IgG
Purification	Affinity purification
Conjugation	Unconjugated
Buffer	PBS with 0.02% sodium azide, 50% glycerol, pH7.3.

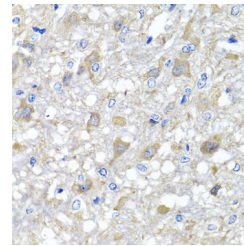
Applications Recommended Dilution

**IHC 1:50-1:200 IF
1:50-1:200**

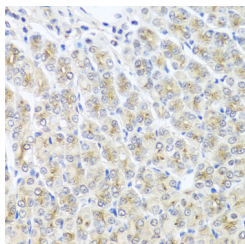
Data



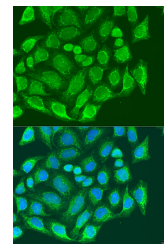
Immunohistochemistry of paraffin-embedded Human colon using MTX1 Polyclonal Antibody at dilution of 1:100 (40x lens).



Immunohistochemistry of paraffin-embedded Rat brain using MTX1 Polyclonal Antibody at dilution of 1:100 (40x lens).

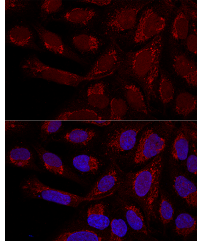


Immunohistochemistry of paraffin-embedded Mouse stomach using MTX1 Polyclonal Antibody at dilution of 1:100 (40x lens).



Immunofluorescence analysis of U2OS cells using MTX1 Polyclonal Antibody at dilution of 1:100. Blue: DAPI for nuclear staining.

For Research Use Only



Confocal immunofluorescence analysis of U2OS cells using MTX1 Polyclonal Antibody at dilution of 1:100. Blue: DAPI for nuclear staining.

Preparation & Storage

Storage Store at -20°C. Avoid freeze / thaw cycles.

Background

MTX1 (Metaxin 1) is a Protein Coding gene. Diseases associated with MTX1 include Gaucher Disease, Type I and Gaucher's Disease. Among its related pathways are Metabolism of proteins and Mitochondrial protein import. An important paralog of this gene is MTX3.