

## PFKP Polyclonal Antibody

**Catalog No.** E-AB-62863

**Note:** Centrifuge before opening to ensure complete recovery of vial contents.

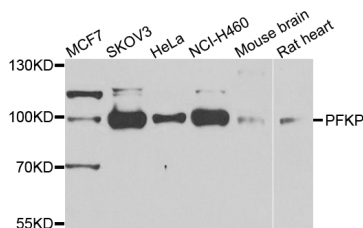
### Description

|                     |  |
|---------------------|--|
| <b>Reactivity</b>   | Human, Mouse, Rat                                    |
| <b>Immunogen</b>    | Recombinant protein of human PFKP                    |
| <b>Host</b>         | Rabbit   |
| <b>Isotype</b>      | IgG  |
| <b>Purification</b> | Affinity purification                                |
| <b>Conjugation</b>  | Unconjugated   |
| <b>Buffer</b>       | PBS with 0.02% sodium azide and 50% glycerol pH 7.4. |

### Applications Recommended Dilution

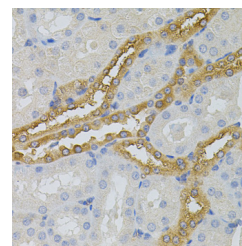
|            |              |
|------------|--------------|
| <b>WB</b>  | 1:500-1:2000 |
| <b>IHC</b> | 1:100-1:200  |

### Data

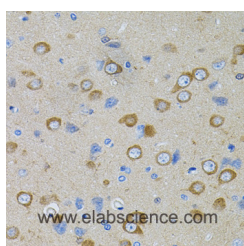


Western blot analysis of extracts of various cell lines with PFKP Polyclonal Antibody

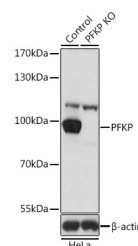
**Observed Mw:100kDa**  
**Calculated Mw:85kDa**



Immunohistochemistry of paraffin-embedded mouse kidney with PFKP Polyclonal Antibody



Immunohistochemistry of paraffin-embedded rat brain with PFKP Polyclonal Antibody



Western blot analysis of extracts from normal (control) and PFKP knockout (KO) HeLa cells, using PFKP Polyclonal Antibody at dilution of 1:1000.

### Preparation & Storage

**Storage** Store at -20°C. Avoid freeze / thaw cycles.

### For Research Use Only

## Background

This gene encodes a member of the phosphofructokinase A protein family. The encoded enzyme is the platelet-specific isoform of phosphofructokinase and plays a key role in glycolysis regulation. This gene may play a role in metabolic reprogramming in some cancers, including clear cell renal cell carcinomas, and cancer of the bladder, breast, and lung. Alternative splicing results in multiple transcript variants.