

## SORT1 Polyclonal Antibody

**Catalog No.** E-AB-62901

**Note:** Centrifuge before opening to ensure complete recovery of vial contents.

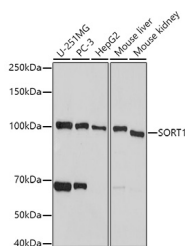
### Description

<b>Reactivity</b>	Human,Mouse,Rat
<b>Immunogen</b>	Recombinant fusion protein of human SORT1
<b>Host</b>	Rabbit
<b>Isotype</b>	IgG
<b>Purification</b>	Affinity purification
<b>Conjugation</b>	Unconjugated
<b>Buffer</b>	PBS with 0.05% proclin300,50% glycerol,pH7.3.

### Applications Recommended Dilution

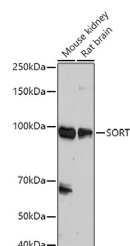
**WB** 1:500-1:2000

### Data



Western blot analysis of extracts of various cell lines using SORT1 Polyclonal Antibody at 1:500 dilution.

**Observed Mw:100KDa**  
**Calculated Mw:77kDa/92kDa**



Western blot analysis of extracts of various cell lines using SORT1 Polyclonal Antibody at 1:500 dilution.

### Preparation & Storage

**Storage** Store at -20°C. Avoid freeze / thaw cycles.

### Background

This gene encodes a member of the VPS10-related sortilin family of proteins. The encoded preproprotein is proteolytically processed by furin to generate the mature receptor. This receptor plays a role in the trafficking of different proteins to either the cell surface, or subcellular compartments such as lysosomes and endosomes. Expression levels of this gene may influence the risk of myocardial infarction in human patients. Alternative splicing results in multiple transcript variants.

### For Research Use Only