

## PRICKLE2 Polyclonal Antibody

**Catalog No.** E-AB-63220

*Note:* Centrifuge before opening to ensure complete recovery of vial contents.

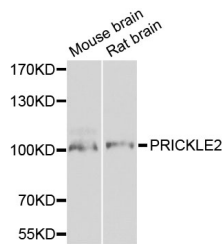
### Description

<b>Reactivity</b>	Human, Mouse, Rat
<b>Immunogen</b>	Recombinant protein of human PRICKLE2
<b>Host</b>	Rabbit
<b>Isotype</b>	IgG
<b>Purification</b>	Affinity purification
<b>Conjugation</b>	Unconjugated
<b>Buffer</b>	PBS with 0.02% sodium azide and 50% glycerol pH 7.4.

### Applications Recommended Dilution

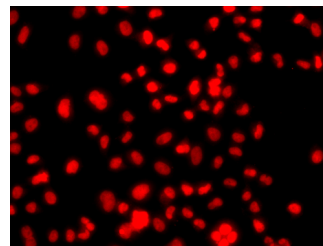
**WB 1:500 - 1:2000 IF**  
**1:50 - 1:100**

### Data



Western blot analysis of extracts of various cell lines with PRICKLE2 Polyclonal Antibody

**Observed Mw:96kDa**  
**Calculated Mw:95kDa**



Immunofluorescence analysis of A549 cells with PRICKLE2 Polyclonal Antibody

### Preparation & Storage

**Storage** Store at -20°C. Avoid freeze / thaw cycles.

### Background

This gene encodes a homolog of *Drosophila* prickle. The exact function of this gene is not known, however, studies in mice suggest that it may be involved in seizure prevention. Mutations in this gene are associated with progressive myoclonic epilepsy type 5.

### For Research Use Only