

AMY2A Polyclonal Antibody

Catalog No. E-AB-62624

Note: Centrifuge before opening to ensure complete recovery of vial contents.

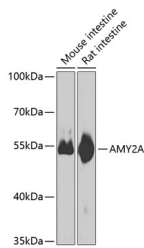
Description

Reactivity	Human, Mouse, Rat
Immunogen	Recombinant fusion protein of human AMY2A (NP_000690.1).
Host	Rabbit
Isotype	IgG
Purification	Affinity purification
Conjugation	Unconjugated
Buffer	PBS with 0.02% sodium azide, 50% glycerol, pH7.3.

Applications Recommended Dilution

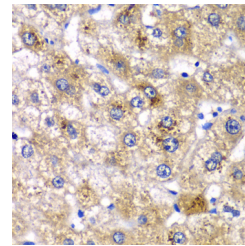
WB 1:500-1:2000 IHC
1:50-1:200

Data

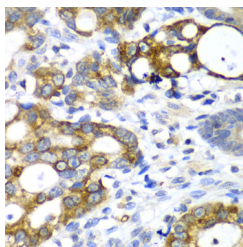


Western blot analysis of extracts of various cell lines using AMY2A Polyclonal Antibody at dilution of 1:1000.

Observed Mw:58kDa
Calculated Mw:30kDa/57kDa



Immunohistochemistry of paraffin-embedded Human liver damage using AMY2A Polyclonal Antibody at dilution of 1:100 (40x lens).



Immunohistochemistry of paraffin-embedded Human gastric cancer using AMY2A Polyclonal Antibody at dilution of 1:100 (40x lens).

Preparation & Storage

Storage Store at -20°C. Avoid freeze / thaw cycles.

For Research Use Only

Background

This gene encodes a member of the alpha-amylase family of proteins. Amylases are secreted proteins that hydrolyze 1,4-alpha-glucoside bonds in oligosaccharides and polysaccharides, catalyzing the first step in digestion of dietary starch and glycogen. This gene and several family members are present in a gene cluster on chromosome 1. This gene encodes an amylase isoenzyme produced by the pancreas.