

Gm13125 Polyclonal Antibody

Catalog Number:E-AB-63235



Note: Centrifuge before opening to ensure complete recovery of vial contents.

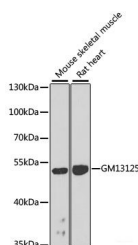
Description

Reactivity	Human,Mouse,Rat
Immunogen	Recombinant fusion protein of mouse Gm13125 (NP_001108549.1).
Host	Rabbit
Isotype	IgG
Purification	Affinity purification
Conjugation	Unconjugated
Formulation	PBS with 0.02% sodium azide, 50% glycerol, pH7.3.

Applications Recommended Dilution

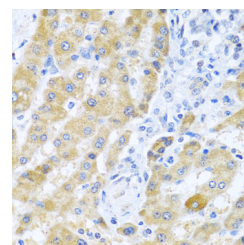
WB	1:500-1:2000
IHC	1:100-1:200

Data

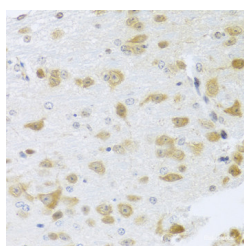


Western blot analysis of extracts of various cell lines using Gm13125 Polyclonal Antibody at dilution of 1:1000.

Observed Mw:55kDa
Calculated Mw:55kDa



Immunohistochemistry of paraffin-embedded Human liver cancer using Gm13125 Polyclonal Antibody at dilution of 1:100 (40x lens).



Immunohistochemistry of paraffin-embedded Mouse brain using Gm13125 Polyclonal Antibody at dilution of 1:100 (40x lens).

Preparation & Storage

Storage Store at -20°C. Avoid freeze / thaw cycles.

Background

PRAMEF20 (PRAME Family Member 20) is a Protein Coding gene. Diseases associated with PRAMEF20 include Dandy-Walker Syndrome. Gene Ontology (GO) annotations related to this gene include retinoic acid receptor binding. An

For Research Use Only

A Reliable Research Partner in Life Science and Medicine

Toll-free: 1-888-852-8623

Web: www.elabscience.com

Tel: 1-832-243-6086

Email: techsupport@elabscience.com

Fax: 1-832-243-6017

Gm13125 Polyclonal Antibody

Catalog Number:E-AB-63235



important paralog of this gene is PRAMEF6.

For Research Use Only

A Reliable Research Partner in Life Science and Medicine

Toll-free: 1-888-852-8623

Tel: 1-832-243-6086

Fax: 1-832-243-6017

Web: www.elabscience.com

Email: techsupport@elabscience.com