

POP7 Polyclonal Antibody

Catalog No. E-AB-62338

Note: Centrifuge before opening to ensure complete recovery of vial contents.

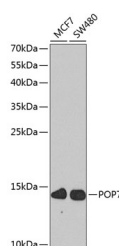
Description

Reactivity	Human
Immunogen	Recombinant fusion protein of human POP7 (NP_005828.2).
Host	Rabbit
Isotype	IgG
Purification	Affinity purification
Conjugation	Unconjugated
Buffer	PBS with 0.02% sodium azide, 50% glycerol, pH7.3.

Applications Recommended Dilution

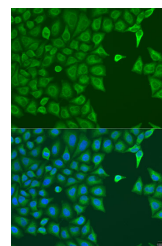
WB 1:500-1:2000 IF
1:50-1:200

Data



Western blot analysis of extracts of various cell lines using POP7 Polyclonal Antibody at dilution of 1:1000.

Observed Mw:14kDa
Calculated Mw:15kDa



Immunofluorescence analysis of U2OS cells using POP7 Polyclonal Antibody at dilution of 1:100. Blue: DAPI for nuclear staining.

Preparation & Storage

Storage Store at -20°C. Avoid freeze / thaw cycles.

Background

POP7 (POP7 Homolog, Ribonuclease P/MRP Subunit) is a Protein Coding gene. Diseases associated with POP7 include Retinitis Pigmentosa 50 and Hairy Tongue. Among its related pathways are tRNA processing and Gene Expression. Gene Ontology (GO) annotations related to this gene include nucleic acid binding and ribonuclease P activity.

For Research Use Only