

## TAZ Polyclonal Antibody

**Catalog No.** E-AB-62408

*Note:* Centrifuge before opening to ensure complete recovery of vial contents.

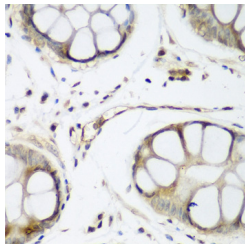
### Description

<b>Reactivity</b>	Human,Mouse,Rat
<b>Immunogen</b>	Recombinant fusion protein of human TAZ (NP_056287.1).
<b>Host</b>	Rabbit
<b>Isotype</b>	IgG
<b>Purification</b>	Affinity purification
<b>Conjugation</b>	Unconjugated
<b>Buffer</b>	PBS with 0.02% sodium azide, 50% glycerol, pH7.3.

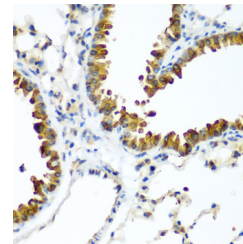
### Applications Recommended Dilution

<b>IHC</b>	1:50-1:200
<b>IF</b>	1:50-1:200

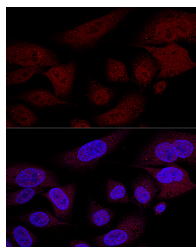
### Data



Immunohistochemistry of paraffin-embedded Human gastric using TAZ Polyclonal Antibody at dilution of 1:200 (40x lens).



Immunohistochemistry of paraffin-embedded Mouse lung using TAZ Polyclonal Antibody at dilution of 1:200 (40x lens).



Confocal immunofluorescence analysis of U2OS cells using TAZ Polyclonal Antibody at dilution of 1:100 (60x lens). Blue: DAPI for nuclear staining.

### Preparation & Storage

**Storage** Store at -20°C. Avoid freeze / thaw cycles.

### Background

### For Research Use Only

GeneCards Summary for WWTR1 Gene WWTR1 (WW Domain Containing Transcription Regulator 1) is a Protein Coding gene. Diseases associated with WWTR1 include Epithelioid Hemangioendothelioma and Histiocytoid Hemangioma. Among its related pathways are Transcriptional activity of SMAD2/SMAD3-SMAD4 heterotrimer and Signaling by GPCR. Gene Ontology (GO) annotations related to this gene include protein homodimerization activity and transcription corepressor activity. An important paralog of this gene is YAP1.