

KCTD15 Polyclonal Antibody

Catalog Number:E-AB-63173



Note: Centrifuge before opening to ensure complete recovery of vial contents.

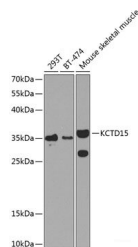
Description

Reactivity	Human,Mouse,Rat
Immunogen	Recombinant fusion protein of human KCTD15
Host	Rabbit
Isotype	IgG
Purification	Affinity purification
Conjugation	Unconjugated
Formulation	PBS with 0.02% sodium azide,50% glycerol,pH7.3.

Applications Recommended Dilution

WB	1:500-1:2000
-----------	--------------

Data



Western blot analysis of extracts of various cell lines using KCTD15 Polyclonal Antibody at 1:1000 dilution.

Observed Mw:32kDa

Calculated Mw:26kDa/31kDa

Preparation & Storage

Storage Store at -20°C. Avoid freeze / thaw cycles.

Background

During embryonic development, interferes with neural crest formation (By similarity. Inhibits AP2 transcriptional activity by interaction with its activation domain.

For Research Use Only

A Reliable Research Partner in Life Science and Medicine

Toll-free: 1-888-852-8623

Web: www.elabscience.com

Tel: 1-832-243-6086

Email: techsupport@elabscience.com

Fax: 1-832-243-6017