

RNF166 Polyclonal Antibody

Catalog No. E-AB-63875

Note: Centrifuge before opening to ensure complete recovery of vial contents.

Description

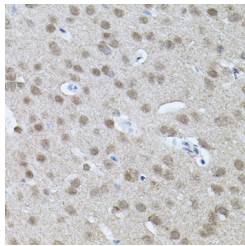
Reactivity	Human,Mouse,Rat
Immunogen	A synthetic peptide of human RNF166 (NP_849163.1).
Host	Rabbit
Isotype	IgG
Purification	Affinity purification
Conjugation	Unconjugated
Buffer	PBS with 0.02% sodium azide, 50% glycerol, pH7.3.

Applications

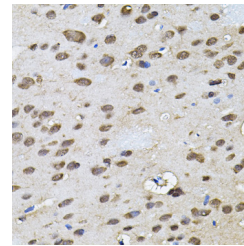
Recommended Dilution

IHC 1:50-1:200

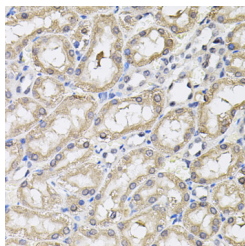
Data



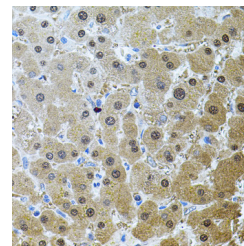
Immunohistochemistry of paraffin-embedded Mouse brain using RNF166 Polyclonal Antibody



Immunohistochemistry of paraffin-embedded Rat brain using RNF166 Polyclonal Antibody



Immunohistochemistry of paraffin-embedded Rat kidney using RNF166 Polyclonal Antibody



Immunohistochemistry of paraffin-embedded Human liver damage using RNF166 Polyclonal Antibody

Preparation & Storage

Storage Store at -20°C. Avoid freeze / thaw cycles.

Background

RNF166 (Ring Finger Protein 166) is a Protein Coding gene. Diseases associated with RNF166 include Generalized Epilepsy With Febrile Seizures Plus, Type 9 and Myopathy, Congenital, Compton-North. An important paralog of this

For Research Use Only

gene is RNF114.