

## NDUFA1 Polyclonal Antibody

Catalog No. E-AB-62138

*Note:* Centrifuge before opening to ensure complete recovery of vial contents.

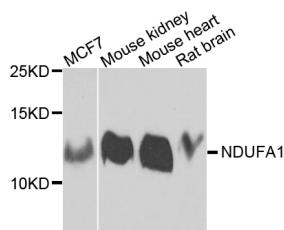
### Description

<b>Reactivity</b>	Human,Mouse,Rat
<b>Immunogen</b>	Recombinant protein of human NDUFA1
<b>Host</b>	Rabbit
<b>Isotype</b>	IgG
<b>Purification</b>	Affinity purification
<b>Conjugation</b>	Unconjugated
<b>Buffer</b>	PBS with 0.02% sodium azide and 50% glycerol pH 7.4.

### Applications Recommended Dilution

**WB** 1:500-1:2000

### Data



Western blot analysis of extracts of various cell lines  
with NDUFA1 Polyclonal Antibody

**Observed Mw:14kDa**

**Calculated Mw:8kDa**

### Preparation & Storage

**Storage** Store at -20°C. Avoid freeze / thaw cycles.

### Background

The human NDUFA1 gene codes for an essential component of complex I of the respiratory chain, which transfers electrons from NADH to ubiquinone. It has been noted that the N-terminal hydrophobic domain has the potential to be folded into an alpha-helix spanning the inner mitochondrial membrane with a C-terminal hydrophilic domain interacting with globular subunits of complex I. The highly conserved two-domain structure suggests that this feature is critical for the protein function and might act as an anchor for the NADH:ubiquinone oxidoreductase complex at the inner mitochondrial membrane. However, the NDUFA1 peptide is one of about 31 components of the 'hydrophobic protein' (HP) fraction of complex I which is involved in proton translocation. Thus the NDUFA1 peptide may also participate in that function.

### For Research Use Only