

NID1 Polyclonal Antibody

Catalog No. E-AB-62843

Note: Centrifuge before opening to ensure complete recovery of vial contents.

Description

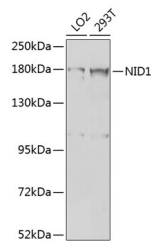
Reactivity	Human
Immunogen	Recombinant fusion protein of human NID1
Host	Rabbit
Isotype	IgG
Purification	Affinity purification
Conjugation	Unconjugated
Buffer	PBS with 0.02% sodium azide,50% glycerol,pH7.3.

Applications

Recommended Dilution

WB 1:500-1:2000

Data



Western blot analysis of extracts of various cell lines using NID1 Polyclonal Antibody at 1:1000 dilution.

Observed Mw:178kDa

Calculated Mw:122kDa/136kDa

Preparation & Storage

Storage Store at -20°C. Avoid freeze / thaw cycles.

Background

This gene encodes a member of the nidogen family of basement membrane glycoproteins. The protein interacts with several other components of basement membranes, and may play a role in cell interactions with the extracellular matrix.

For Research Use Only