

ITGB8 Polyclonal Antibody

Catalog No. E-AB-62109

Note: Centrifuge before opening to ensure complete recovery of vial contents.

Description

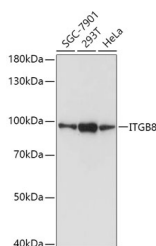
Reactivity	Human,Mouse,Rat
Immunogen	Recombinant fusion protein of human ITGB8
Host	Rabbit
Isotype	IgG
Purification	Affinity purification
Conjugation	Unconjugated
Buffer	PBS with 0.05% proclin300,50% glycerol,pH7.3.

Applications

Recommended Dilution

WB 1:500-1:2000

Data



Western blot analysis of various lysates using ITGB8 Polyclonal Antibody at 1:500 dilution.

Observed Mw:90KDa

Calculated Mw:71kDa/85kDa

Preparation & Storage

Storage Store at -20°C. Avoid freeze / thaw cycles.

Background

This gene is a member of the integrin beta chain family and encodes a single-pass type I membrane protein with a VWFA domain and four cysteine-rich repeats. This protein noncovalently binds to an alpha subunit to form a heterodimeric integrin complex. In general, integrin complexes mediate cell-cell and cell-extracellular matrix interactions and this complex plays a role in human airway epithelial proliferation. Alternatively spliced variants which encode different protein isoforms have been described; however, not all variants have been fully characterized.

For Research Use Only