

PHF1 Polyclonal Antibody

Catalog No. E-AB-62161

Note: Centrifuge before opening to ensure complete recovery of vial contents.

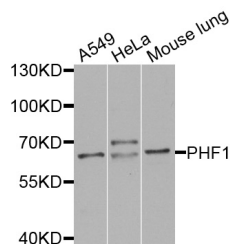
Description

| | |
|---------------------|--|
| Reactivity | Human, Mouse, Rat |
| Immunogen | Recombinant protein of human PHF1 |
| Host | Rabbit |
| Isotype | IgG |
| Purification | Affinity purification |
| Conjugation | Unconjugated |
| Buffer | PBS with 0.02% sodium azide and 50% glycerol pH 7.4. |

Applications Recommended Dilution

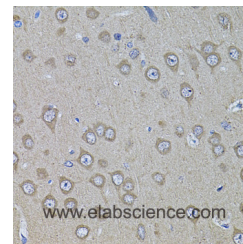
| | |
|------------|--------------|
| WB | 1:500-1:2000 |
| IHC | 1:50-1:200 |

Data

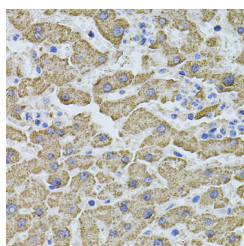


Western blot analysis of extracts of various cell lines with PHF1 Polyclonal Antibody

Observed Mw:62kDa
Calculated Mw:49kDa/62kDa



Immunohistochemistry of paraffin-embedded rat brain with PHF1 Polyclonal Antibody



Immunohistochemistry of paraffin-embedded human liver injury with PHF1 Polyclonal Antibody

Preparation & Storage

Storage Store at -20°C. Avoid freeze / thaw cycles.

Background

For Research Use Only

This gene encodes a Polycomb group protein. The protein is a component of a histone H3 lysine-27 (H3K27)-specific methyltransferase complex, and functions in transcriptional repression of homeotic genes. The protein is also recruited to double-strand breaks, and reduced protein levels results in X-ray sensitivity and increased homologous recombination. Multiple transcript variants encoding different isoforms have been found for this gene.