

RPP30 Polyclonal Antibody

Catalog Number:E-AB-62351

Note: Centrifuge before opening to ensure complete recovery of vial contents.

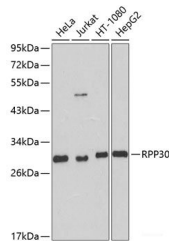
Description

Reactivity	Human,Mouse,Rat
Immunogen	Recombinant fusion protein of human RPP30 (NP_006404.1).
Host	Rabbit
Isotype	IgG
Purification	Affinity purification
Conjugation	Unconjugated
Formulation	PBS with 0.02% sodium azide, 50% glycerol, pH7.3.

Applications Recommended Dilution

WB	1:500-1:2000
IHC	1:100-1:200

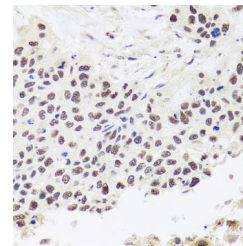
Data



Western blot analysis of extracts of various cell lines using RPP30 Polyclonal Antibody at dilution of 1:1000.

Observed Mw:29kDa

Calculated Mw:29kDa/35kDa



Immunohistochemistry of paraffin-embedded Human lung cancer using RPP30 Polyclonal Antibody at dilution of 1:100 (40x lens).

Preparation & Storage

Storage Store at -20°C. Avoid freeze / thaw cycles.

Background

RPP30 (Ribonuclease P/MRP Subunit P30) is a Protein Coding gene. Diseases associated with RPP30 include Hydrolethalus Syndrome 1 and Entropion. Among its related pathways are rRNA processing in the nucleus and cytosol and tRNA processing. Gene Ontology (GO) annotations related to this gene include ribonuclease P activity.

For Research Use Only

A Reliable Research Partner in Life Science and Medicine

Toll-free: 1-888-852-8623

Web: www.elabscience.com

Tel: 1-832-243-6086

Email: techsupport@elabscience.com

Fax: 1-832-243-6017