

PSIP1 Polyclonal Antibody

Catalog Number:E-AB-62378



Note: Centrifuge before opening to ensure complete recovery of vial contents.

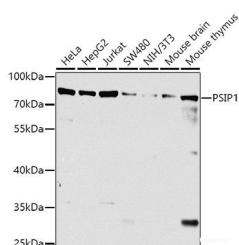
Description

| | |
|---------------------|--|
| Reactivity | Human,Mouse,Rat |
| Immunogen | Recombinant fusion protein of human PSIP1 (NP_150091.2). |
| Host | Rabbit |
| Isotype | IgG |
| Purification | Affinity purification |
| Conjugation | Unconjugated |
| Formulation | PBS with 0.02% sodium azide, 50% glycerol, pH7.3. |

Applications Recommended Dilution

| | |
|-----------|--------------|
| WB | 1:500-1:2000 |
|-----------|--------------|

Data



Western blot analysis of extracts of various cell lines using PSIP1 Polyclonal Antibody at dilution of 1:1000.

Observed Mw:90kDa

Calculated Mw:37kDa/60kDa

Preparation & Storage

Storage Store at -20°C. Avoid freeze / thaw cycles.

Background

PSIP1 (PC4 And SFRS1 Interacting Protein 1) is a Protein Coding gene. Diseases associated with PSIP1 include Dermatitis, Atopic and Immune Deficiency Disease. Among its related pathways are Neuroscience and NF-KappaB Family Pathway. An important paralog of this gene is HDGFL2.

For Research Use Only

A Reliable Research Partner in Life Science and Medicine

Toll-free: 1-888-852-8623

Web: www.elabscience.com

Tel: 1-832-243-6086

Email: techsupport@elabscience.com

Fax: 1-832-243-6017