

## TIMM10B Polyclonal Antibody

Catalog No. E-AB-62414

*Note:* Centrifuge before opening to ensure complete recovery of vial contents.

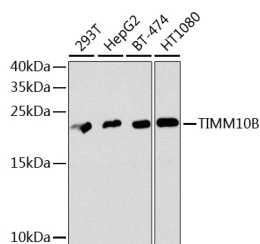
### Description

<b>Reactivity</b>	Human, Mouse
<b>Immunogen</b>	Recombinant fusion protein of human TIMM10B (NP_036324.1).
<b>Host</b>	Rabbit
<b>Isotype</b>	IgG
<b>Purification</b>	Affinity purification
<b>Conjugation</b>	Unconjugated
<b>Buffer</b>	PBS with 0.02% sodium azide, 50% glycerol, pH7.3.

### Applications Recommended Dilution

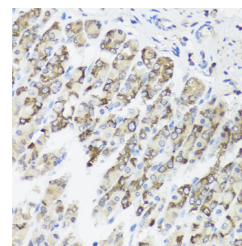
<b>WB</b>	1:500-1:2000
<b>IHC</b>	1:50-1:100

### Data

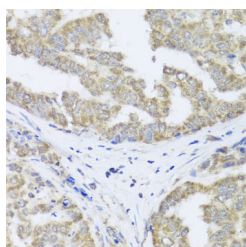


Western blot analysis of extracts of various cell lines using TIMM10B Polyclonal Antibody at dilution of 1:1000.

**Observed Mw:24kDa**  
**Calculated Mw:11kDa**



Immunohistochemistry of paraffin-embedded Mouse stomach using TIMM10B Polyclonal Antibody at dilution of 1:100 (40x lens).



Immunohistochemistry of paraffin-embedded Human liver cancer using TIMM10B Polyclonal Antibody at dilution of 1:100 (40x lens).

### Preparation & Storage

#### For Research Use Only

**Storage**                      Store at -20°C. Avoid freeze / thaw cycles.

## Background

FXC1, or TIMM10B, belongs to a family of evolutionarily conserved proteins that are organized in heterooligomeric complexes in the mitochondrial intermembrane space. These proteins mediate the import and insertion of hydrophobic membrane proteins into the mitochondrial inner membrane.