

## SMEK1 Polyclonal Antibody

**Catalog No.** E-AB-62484

*Note:* Centrifuge before opening to ensure complete recovery of vial contents.

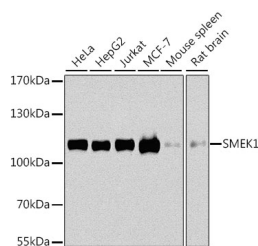
### Description

<b>Reactivity</b>	Human, Mouse, Rat
<b>Immunogen</b>	Recombinant fusion protein of human SMEK1 (NP_001271210.1).
<b>Host</b>	Rabbit
<b>Isotype</b>	IgG
<b>Purification</b>	Affinity purification
<b>Conjugation</b>	Unconjugated
<b>Buffer</b>	PBS with 0.02% sodium azide, 50% glycerol, pH7.3.

### Applications Recommended Dilution

<b>WB</b>	1:500-1:2000
<b>IHC</b>	1:50-1:100

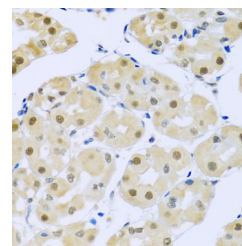
### Data



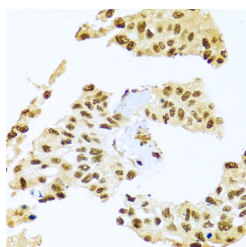
Western blot analysis of extracts of various cell lines using SMEK1 Polyclonal Antibody at dilution of 1:1000.

**Observed Mw:110kDa**

**Calculated Mw:62kDa/67kDa/93kDa/95kDa**



Immunohistochemistry of paraffin-embedded Human stomach using SMEK1 Polyclonal Antibody at dilution of 1:100 (40x lens).



Immunohistochemistry of paraffin-embedded Human lung cancer using SMEK1 Polyclonal Antibody at dilution of 1:100 (40x lens).

### Preparation & Storage

#### For Research Use Only

**Storage** Store at -20°C. Avoid freeze / thaw cycles.

## Background

PPP4R3A (Protein Phosphatase 4 Regulatory Subunit 3A) is a Protein Coding gene. Among its related pathways are Glucagon signaling pathway and Integrated Breast Cancer Pathway. An important paralog of this gene is PPP4R3B.

---

## For Research Use Only