

## RARS2 Polyclonal Antibody

**Catalog No.** E-AB-62498

*Note:* Centrifuge before opening to ensure complete recovery of vial contents.

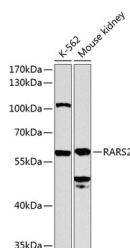
### Description

<b>Reactivity</b>	Human,Mouse
<b>Immunogen</b>	Recombinant fusion protein of human RARS2
<b>Host</b>	Rabbit
<b>Isotype</b>	IgG
<b>Purification</b>	Affinity purification
<b>Conjugation</b>	Unconjugated
<b>Buffer</b>	PBS with 0.02% sodium azide,50% glycerol,pH7.3.

### Applications Recommended Dilution

**WB** 1:500-1:2000

### Data



Western blot analysis of extracts of various cell lines using RARS2 Polyclonal Antibody at 1:1000 dilution.

**Observed Mw:58kDa**  
**Calculated Mw:65kDa**

### Preparation & Storage

**Storage** Store at -20°C. Avoid freeze / thaw cycles.

### Background

This nuclear gene encodes a protein that localizes to the mitochondria, where it catalyzes the transfer of L-arginine to its cognate tRNA, an important step in translation of mitochondrially-encoded proteins. Defects in this gene are a cause of pontocerebellar hypoplasia type 6 (PCH6). Alternative splicing results in multiple transcript variants.

### For Research Use Only