

## TEFM Polyclonal Antibody

**Catalog No.** E-AB-62522

*Note:* Centrifuge before opening to ensure complete recovery of vial contents.

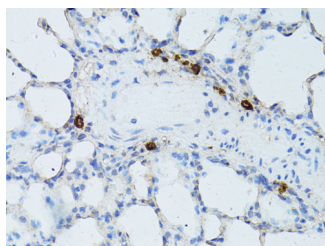
### Description

<b>Reactivity</b>	Human,Mouse,Rat
<b>Immunogen</b>	Recombinant fusion protein of human TEFM (NP_078959.3).
<b>Host</b>	Rabbit
<b>Isotype</b>	IgG
<b>Purification</b>	Affinity purification
<b>Conjugation</b>	Unconjugated
<b>Buffer</b>	PBS with 0.02% sodium azide, 50% glycerol, pH7.3.

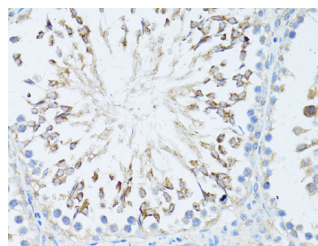
### Applications Recommended Dilution

<b>IHC</b>	1:50-1:200
<b>IF</b>	1:50-1:200

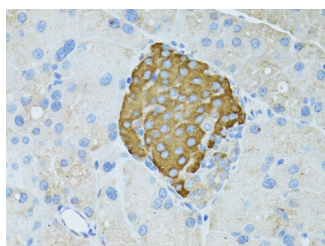
### Data



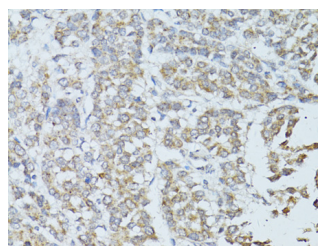
Immunohistochemistry of paraffin-embedded Rat lung using TEFM Polyclonal Antibody at dilution of 1:100 (40x lens).



Immunohistochemistry of paraffin-embedded Rat testis using TEFM Polyclonal Antibody at dilution of 1:100 (40x lens).

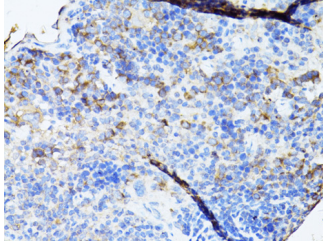


Immunohistochemistry of paraffin-embedded Rat pancreas using TEFM Polyclonal Antibody at dilution of 1:100 (40x lens).

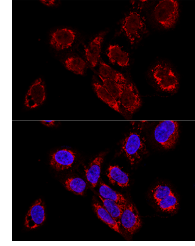


Immunohistochemistry of paraffin-embedded Human colon carcinoma using TEFM Polyclonal Antibody at dilution of 1:100 (40x lens).

### For Research Use Only



Immunohistochemistry of paraffin-embedded Mouse spleen using TEFM Polyclonal Antibody at dilution of 1:100 (40x lens).



Confocal immunofluorescence analysis of U2OS cells using TEFM Polyclonal Antibody at dilution of 1:100. Blue: DAPI for nuclear staining.

## Preparation & Storage

**Storage** Store at -20°C. Avoid freeze / thaw cycles.

## Background

TEFM (Transcription Elongation Factor, Mitochondrial) is a Protein Coding gene. Diseases associated with TEFM include Mitochondrial Dna Depletion Syndrome 8A and Mitochondrial Dna Depletion Syndrome 11. Gene Ontology (GO) annotations related to this gene include nucleic acid binding and crossover junction endodeoxyribonuclease activity.

## For Research Use Only