

## ZNF408 Polyclonal Antibody

**Catalog No.** E-AB-62523

**Note:** Centrifuge before opening to ensure complete recovery of vial contents.

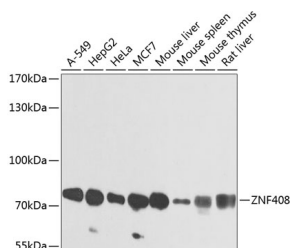
### Description

<b>Reactivity</b>	Human,Mouse,Rat
<b>Immunogen</b>	Recombinant fusion protein of human ZNF408
<b>Host</b>	Rabbit
<b>Isotype</b>	IgG
<b>Purification</b>	Affinity purification
<b>Conjugation</b>	Unconjugated
<b>Buffer</b>	PBS with 0.02% sodium azide,50% glycerol,pH7.3.

### Applications Recommended Dilution

**WB** 1:500-1:2000

### Data



Western blot analysis of extracts of various cell lines using ZNF408 Polyclonal Antibody at 1:1000 dilution.

**Observed Mw:78kDa**  
**Calculated Mw:78kDa**

### Preparation & Storage

**Storage** Store at -20°C. Avoid freeze / thaw cycles.

### Background

The protein encoded by this gene contains ten tandem zinc fingers and an N-terminal SET domain, so it is likely a DNA binding protein that interacts with other proteins. In adults, the encoded protein is expressed most highly in retina. Consequently, defects in this gene have been associated with familial exudative vitreoretinopathy (FEVR) and retinitis pigmentosa (RP).

### For Research Use Only