

GPRC6A Polyclonal Antibody

Catalog No. E-AB-63224

Note: Centrifuge before opening to ensure complete recovery of vial contents.

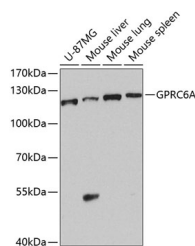
Description

Reactivity	Human, Mouse
Immunogen	Recombinant fusion protein of human GPRC6A (NP_683766.2).
Host	Rabbit
Isotype	IgG
Purification	Affinity purification
Conjugation	Unconjugated
Buffer	PBS with 0.02% sodium azide, 50% glycerol, pH7.3.

Applications Recommended Dilution

WB 1:500-1:2000

Data



Western blot analysis of extracts of various cell lines using GPRC6A Polyclonal Antibody at dilution of 1:1000.

Observed Mw:120kDa

Calculated Mw:84kDa/96kDa/104kDa

Preparation & Storage

Storage Store at -20°C. Avoid freeze / thaw cycles.

Background

Members of family C of the G protein-coupled receptor (GPCR) superfamily, such as GPRC6A, are characterized by an evolutionarily conserved amino acid-sensing motif linked to an intramembranous 7-transmembrane loop region. Several members of GPCR family C, including GPRC6A, also have a long N-terminal domain.

For Research Use Only