

## TRPA1 Polyclonal Antibody

**Catalog No.** E-AB-62987

**Note:** Centrifuge before opening to ensure complete recovery of vial contents.

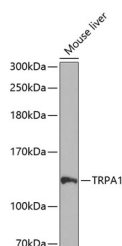
### Description

<b>Reactivity</b>	Human, Mouse, Rat
<b>Immunogen</b>	A synthetic peptide of human TRPA1 (NP_015628.2).
<b>Host</b>	Rabbit
<b>Isotype</b>	IgG
<b>Purification</b>	Affinity purification
<b>Conjugation</b>	Unconjugated
<b>Buffer</b>	PBS with 0.02% sodium azide, 50% glycerol, pH7.3.

### Applications Recommended Dilution

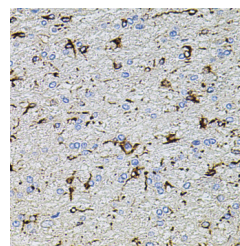
<b>WB</b>	1:500-1:2000
<b>IHC</b>	1:50-1:200

### Data

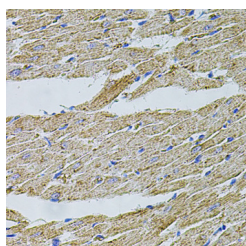


Western blot analysis of extracts of Mouse liver using TRPA1 Polyclonal Antibody at dilution of 1:1000.

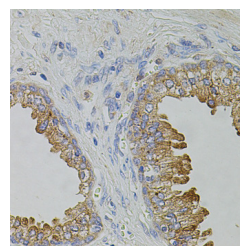
**Observed Mw:128kDa**  
**Calculated Mw:127kDa**



Immunohistochemistry of paraffin-embedded Rat brain using TRPA1 Polyclonal Antibody at dilution of 1:100 (40x lens).

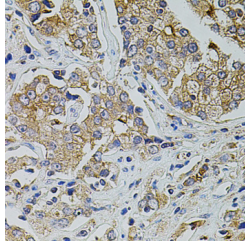


Immunohistochemistry of paraffin-embedded Rat heart using TRPA1 Polyclonal Antibody at dilution of 1:100 (40x lens).

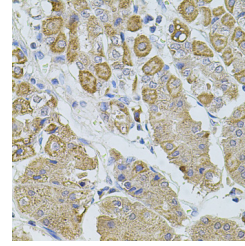


Immunohistochemistry of paraffin-embedded Human prostate using TRPA1 Polyclonal Antibody at dilution of 1:100 (40x lens).

### For Research Use Only



Immunohistochemistry of paraffin-embedded Human prostate cancer using TRPA1 Polyclonal Antibody at dilution of 1:100 (40x lens).



Immunohistochemistry of paraffin-embedded Human stomach using TRPA1 Polyclonal Antibody at dilution of 1:100 (40x lens).

## Preparation & Storage

**Storage** Store at -20°C. Avoid freeze / thaw cycles.

## Background

The structure of the protein encoded by this gene is highly related to both the protein ankyrin and transmembrane proteins. The specific function of this protein has not yet been determined; however, studies indicate the function may involve a role in signal transduction and growth control.