

BCCIP Polyclonal Antibody

Catalog No. E-AB-62492

Note: Centrifuge before opening to ensure complete recovery of vial contents.

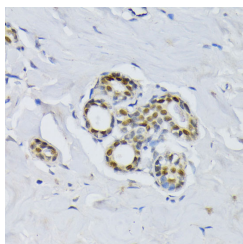
Description

| | |
|---------------------|--|
| Reactivity | Human,Mouse,Rat |
| Immunogen | Recombinant fusion protein of human BCCIP (NP_510868.1). |
| Host | Rabbit |
| Isotype | IgG |
| Purification | Affinity purification |
| Conjugation | Unconjugated |
| Buffer | PBS with 0.02% sodium azide, 50% glycerol, pH7.3. |

Applications Recommended Dilution

| | |
|------------|-------------|
| IHC | 1:100-1:200 |
|------------|-------------|

Data



Immunohistochemistry of paraffin-embedded Human breast using BCCIP Polyclonal Antibody at dilution of 1:100 (40x lens).

Preparation & Storage

Storage Store at -20°C. Avoid freeze / thaw cycles.

Background

This gene product was isolated on the basis of its interaction with BRCA2 and p21 proteins. It is an evolutionarily conserved nuclear protein with multiple interacting domains. The N-terminal half shares moderate homology with regions of calmodulin and M-calpain, suggesting that it may also bind calcium. Functional studies indicate that this protein may be an important cofactor for BRCA2 in tumor suppression, and a modulator of CDK2 kinase activity via p21. This protein has also been implicated in the regulation of BRCA2 and RAD51 nuclear focus formation, double-strand break-induced homologous recombination, and cell cycle progression. Multiple transcript variants encoding different isoforms have been described for this gene.

For Research Use Only