

## TMC1 Polyclonal Antibody

**Catalog No.** E-AB-63885

*Note:* Centrifuge before opening to ensure complete recovery of vial contents.

### Description

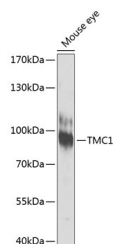
<b>Reactivity</b>	Human, Mouse, Rat
<b>Immunogen</b>	A synthetic peptide of human TMC1 (NP_619636.2).
<b>Host</b>	Rabbit
<b>Isotype</b>	IgG
<b>Purification</b>	Affinity purification
<b>Conjugation</b>	Unconjugated
<b>Buffer</b>	PBS with 0.02% sodium azide, 50% glycerol, pH7.3.

### Applications

### Recommended Dilution

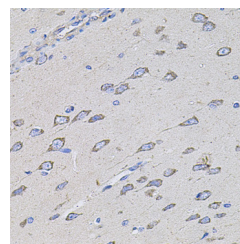
<b>WB</b>	1:500-1:2000
<b>IHC</b>	1:50-1:200

### Data

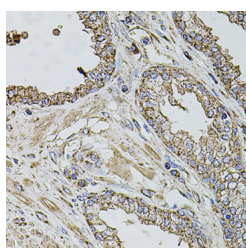


Western blot analysis of extracts of Mouse eye using TMC1 Polyclonal Antibody at dilution of 1:1000.

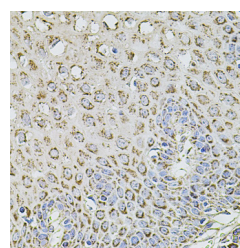
**Observed Mw:88kDa**  
**Calculated Mw:87kDa**



Immunohistochemistry of paraffin-embedded Rat brain using TMC1 Polyclonal Antibody at dilution of 1:100 (40x lens).



Immunohistochemistry of paraffin-embedded Human prostate using TMC1 Polyclonal Antibody at dilution of 1:100 (40x lens).



Immunohistochemistry of paraffin-embedded Human esophagus using TMC1 Polyclonal Antibody at dilution of 1:100 (40x lens).

### Preparation & Storage

**Storage** Store at -20°C. Avoid freeze / thaw cycles.

### For Research Use Only

## Background

This gene is considered a member of a gene family predicted to encode transmembrane proteins. The specific function of this gene is unknown; however, it is known to be required for normal function of cochlear hair cells. Mutations in this gene have been associated with progressive postlingual hearing loss and profound prelingual deafness.