

GDI2 Polyclonal Antibody

Catalog No. E-AB-63887

Note: Centrifuge before opening to ensure complete recovery of vial contents.

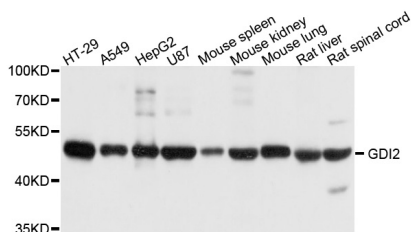
Description

Reactivity	Human, Mouse, Rat
Immunogen	Recombinant protein of human GDI2
Host	Rabbit
Isotype	IgG
Purification	Affinity purification
Conjugation	Unconjugated
Buffer	PBS with 0.02% sodium azide and 50% glycerol pH 7.4.

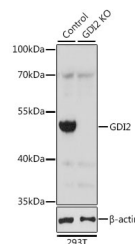
Applications Recommended Dilution

WB 1:200-1:3000

Data



Western blot analysis of extracts of various cell lines with GDI2 Polyclonal Antibody
Observed Mw:51kDa
Calculated Mw:45kDa/50kDa



Western blot analysis of extracts from normal (control) and GDI2 knockout (KO) 293T cells, using GDI2 Polyclonal Antibody at dilution of 1:2000.

Preparation & Storage

Storage Store at -20°C. Avoid freeze / thaw cycles.

Background

GDP dissociation inhibitors are proteins that regulate the GDP-GTP exchange reaction of members of the rab family, small GTP-binding proteins of the ras superfamily, that are involved in vesicular trafficking of molecules between cellular organelles. GDIs slow the rate of dissociation of GDP from rab proteins and release GDP from membrane-bound rabs. GDI2 is ubiquitously expressed. The GDI2 gene contains many repetitive elements indicating that it may be prone to inversion/deletion rearrangements. Alternative splicing results in multiple transcript variants encoding distinct isoforms.

For Research Use Only