

# GTF2E2 Polyclonal Antibody

Catalog Number:E-AB-63899



**Note:** Centrifuge before opening to ensure complete recovery of vial contents.

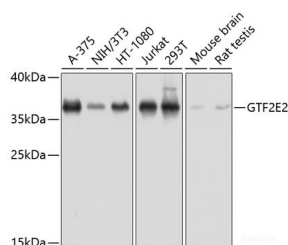
## Description

<b>Reactivity</b>	Human,Mouse,Rat
<b>Immunogen</b>	Recombinant fusion protein of human GTF2E2 (NP_002086.1).
<b>Host</b>	Rabbit
<b>Isotype</b>	IgG
<b>Purification</b>	Affinity purification
<b>Conjugation</b>	Unconjugated
<b>Formulation</b>	PBS with 0.02% sodium azide, 50% glycerol, pH7.3.

## Applications Recommended Dilution

<b>WB</b>	1:500-1:2000
-----------	--------------

## Data



Western blot analysis of extracts of various cell lines using GTF2E2 Polyclonal Antibody at dilution of 1:1000.

**Observed Mw:37kDa**  
**Calculated Mw:33kDa**

## Preparation & Storage

**Storage** Store at -20°C. Avoid freeze / thaw cycles.

## Background

The general transcription factor IIE (TFIIE) is part of the RNA polymerase II transcription initiation complex, recruiting TFIIF and being essential for promoter clearance by RNA polymerase II. TFIIE is a heterodimer (and sometimes heterotetramer) of alpha and beta subunits. The protein encoded by this gene represents the beta subunit of TFIIE.

## For Research Use Only

A Reliable Research Partner in Life Science and Medicine

Toll-free: 1-888-852-8623

Web: [www.elabscience.com](http://www.elabscience.com)

Tel: 1-832-243-6086

Email: [techsupport@elabscience.com](mailto:techsupport@elabscience.com)

Fax: 1-832-243-6017